

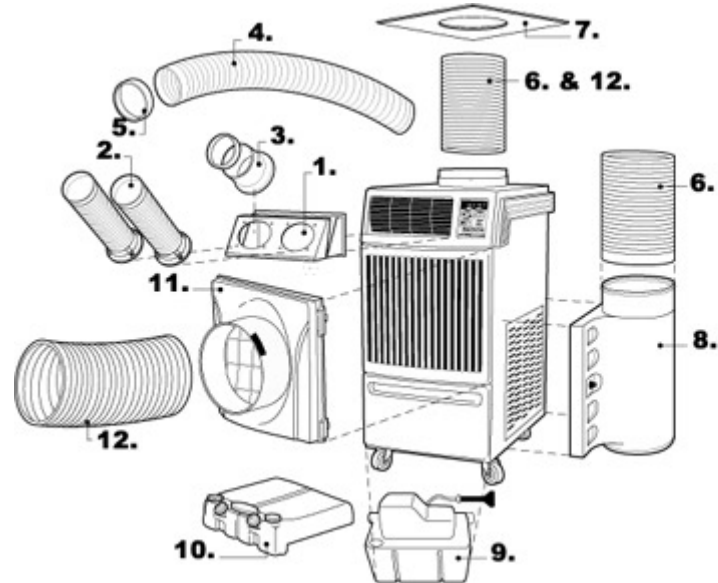


1-21 Grenfell Crescent
Ottawa, Ontario K2G 0G3
Phone: 613-723-0359
Fax: 613-226-4892
Toll Free: 1-888-279-2505
Email: sales@digelair.com
Web: www.digelair.com

Model: OFFICE PRO 60

SPECIFICATIONS:

Cooling Capacity = 59500 BTU, 1940 CFM evap. fan, 2830 CFM cond. fan
Operating Conditions, inlet air = min 65°F max 105°F @ 50% RH
Electrical Requirements = 208-230/1/60 volts, 33 A, requires 50 amp breaker, 6-50 plug
Unit Weight = 625 lbs. (shipping 755 lbs.)
Unit Dimensions = 30" W x 52" D x 64"
Minimum room temperature set point = 65°



No.	Part Name	Office Pro 60 - OPTIONAL ACCESSORY Part Description	Part Number
1.	Nozzle Adapter Duct Adapter	Four-piece metal frame converts airflow from louvers to nozzles or cold air ducts. Includes mounting screws. (Nozzles and ducts sold separately.) Same as above, but for use with cold air flexible ducts. Includes flange. (Cold air flexible ducts sold separately.)	LAY45770-0070 (6") LAY45770-0080 (8")
2.	Nozzle	6" diameter white plastic nozzle that extends up to 3-1/2' in length. Includes flange, mounting screws and trim ring. (Purchase two sets of two.)	484209-0050 (6")
3.	Cold Air Flange	6" diameter white metal flange with wire clamp and mounting screws. Use with cold air ducts.	481170-0250 (6")
4.	Cold Air Self-Supported Duct Cold Air Flexible Duct	6" or 8" adjustable diameter, white PVC duct that extends from 6-1/2' to 10' in length. 8" diameter wire-reinforced, accordion-style duct in 25' lengths.	481744-0030 (6") LA-146499-0320 (8") LAY45810-0030 (8")
5.	Trim Ring	8" diameter wire-reinforced, accordion-style duct in 25' lengths.	LAY45810-0030 (8")
6.	Warm Air Self-Supported Duct	16" diameter wire-reinforced, accordion-style duct for condenser exhaust or intake. Includes clamp.	LAY45820-0010
7.	Ceiling Tile	24" x 24" white tile with 16" flange for condenser air exhaust / return duct.	MOVCTILE2416
8.	Condenser Return Air Plenum	White plastic plenum for return air to condenser. Hinged for filter cleaning.	LAY84270-0060
9.	Automatic Condensate Pump	Included as standard for this model.	NA
10.	Condensate Tank Condensate Float (not shown)	Drain tank storage for condensation. Requires condensate float, sold separately. Controls water level in condensate tanks.	484730-0010 484460-0010
11.	Evaporator Return Air Plenum Caster Swivel Locks (not shown)	White plastic plenum for return air to evaporator. Locks swivel on rear casters for improved maneuverability of unit. Sold in sets of two.	LAY84270-0070 LAY46521-0020
12.	Return Air Self-Supported Duct	16" diameter wire-reinforced, accordion-style duct for evaporator intake. Includes clamp.	LAY45820-0010